

# WHERE WE STAND

PRESENTED BY



TEXAS  
INSTRUMENTS

**FEBRUARY 25 - MARCH 22**

**BRYANT HALL**  
KALITA HUMPHREYS CAMPUS

**DALLAS THEATER CENTER 2025-2026 SEASON**

LIZ MIKEL AS MAN

# ROOM FOR THE ENTIRE CAST

 LEXUS  
EXPERIENCE AMAZING



/ LEXUSTX

# DALLAS THEATER CENTER

Kevin Moriarty | Executive Director  
Jonathan Norton | Interim Artistic Director

in association with

## STAGE WEST THEATRE

Dana Schultes | Executive Producer  
Garret Storms | Associate Producer

PRESENTS

# WHERE WE STAND

By Donnetta Lavinia Grays  
Directed By Akin Babatunde

WITH

Liz Mikel

SCENIC DESIGN

Bob Lavallee

COSTUME DESIGN

Hope Cox

LIGHTING DESIGN

Bryan Stevenson

SOUND DESIGN

Claudia Jenkins Martinez

PRODUCTION STAGE MANAGER

Rayven Harris\*

PRODUCTION MANAGER

Ashley Oliver

DIRECTOR OF PRODUCTION

Andrew J. Brown

**"Where We Stand"** is presented by arrangement with  
Concord Theatricals on behalf of Samuel French, Inc.  
[www.concordtheatricals.com](http://www.concordtheatricals.com)



# FUELING A *VIBRANT* ARTS COMMUNITY FOR *DALLAS*

# TACA

[taca-arts.org](http://taca-arts.org)

## CAST

**Liz Mikel**\*+

*Plays all roles:*

Man

Stranger

Townsperson

Middle-Aged Man

Old Woman

Doc Humphrey

"Little Horns" Lady

Davey

Orchard Lady

## UNDERSTUDY

Bwalya Chisanga

## SETTING

*We are where we are. We are who we are. The time is now.*

## CREATIVE SUPPORT & CREW

Assistant Director.....Ptosha Storey  
Production Assistant.....Samuel Sapina  
Music Supervisor.....Stephen A. Taylor  
Carpenters.....Craig Elam  
Colin "Big Fish" Hancock and Rose Tharp  
Stage Operations Manager.....Squeak Henderson  
Deck Crew.....Laura Berrios  
Wardrobe Technician.....Karina Sanchez  
Electricians.....Oso Padilla, Michael Price  
Leo Thomas and Luci Nardi

THE VIDEOTAPING OR MAKING OF ELECTRONIC OR OTHER AUDIO AND/OR VISUAL RECORDINGS OF THIS PRODUCTION AND DISTRIBUTING RECORDINGS OR STREAMS IN ANY MEDIUM, INCLUDING THE INTERNET, IS STRICTLY PROHIBITED, A VIOLATION OF THE AUTHOR(S)'S RIGHTS AND ACTIONABLE UNDER UNITED STATES COPYRIGHT LAW. FOR MORE INFORMATION, PLEASE VISIT:  
<https://concordtheatricals.com/resources/protecting-artists>



This Theatre operates under an agreement between the League of Resident Theatres and Actors' Equity Association, the Union of Professional Actors and Stage Managers in the United States.



Dallas Theater Center is a member of the League of Resident Theatres; a constituent of Theatre Communications Group (TCG), the national organization for the nonprofit professional theater; and Visit Dallas.

Dallas Theater Center's Production staff are responsible for the building and making of scenery, props, paints, costumes, wigs, hair & make-up, lighting, and sound in this production

\*Member of the Diane and Hal Brierley Resident Acting Company  
\*Member of Actors' Equity Association, the Union of Professional Actors and Stage Managers in the United States.



The Director is a Member of the STAGE DIRECTORS AND CHOREOGRAPHERS SOCIETY, a national theatrical labor union.



The scenic, costume, lighting, sound and projection designers in LORT Theatres are represented by United Scenic Artists, Local USA-829 of the IATSE.



**Building  
stronger  
communities**



[ti.com/giving](https://ti.com/giving)

TI and the TI Foundation are proud to support the Dallas Theater Center. Thank you for your continued commitment to artistic excellence and for bringing our communities together through the power of live performance.



**TEXAS INSTRUMENTS**



# WHERE WE STAND

Notes from Director

## AKIN BABATUNDE



The game of life both includes and excludes those who dare to play it. Those who enter come equipped—with courage, with burdens, and with a dammed-up reservoir of experiences that shape their journey.

They carry with them a backpack of memory and trial—a mixture of triumphs and losses, privilege and poverty, leadership and submission. Life tests these players, offering moments of victory and defeat, of belonging and exile. *Where We Stand* invites us to witness one such journey—a soul caught in the tension between self and community, between desire and consequence. In this world, moral choices are not made in isolation. They ripple, echo, and demand accountability. What do we owe each other? What do we risk when we step out of line, or worse—step ahead? This is a play about reckoning. About what it means to stand, alone and together.

This play touches on several themes, some including community, poverty, belonging, and temptation. The playwright challenges our empathy in real time by placing us at the town's center at the crossroads of our humanity. Do we choose to absolve or condemn? Rebuild together or have our dream town without 'MAN'?

# MEET THE ARTISTS



## LIZ MIKEL MAN

is a founding member of the Diane and Hal Brierley Resident Acting Company of Dallas Theater Center, celebrating her 34th year at DTC. **Broadway and Off-Broadway credits:** *1776*; *Fruit Trilogy*; *Lysistrata Jones*. **National Tours:** *Blues In The Night*; *1776*. **TV/Film:** *The Blazing World*; *Miss Juneteenth*; *Get On Up*; *Dallas*; *The Secret Life of Walter Mitty*; *Straight A's*; *Past Life*; *Friday Night Lights*; *Sordid Lives: The Series*; *Welcome Home*; *Roscoe Jenkins*; *Bad Thoughts* (Netflix). **Regional Credits:** TUTS, The MUNY, American Repertory Theater, ACT (Seattle), Arkansas Repertory Theater. 2015 Lunt Fontanne Fellow. She is represented by The Mary Collins Agency.

**Instagram** | @miz\_lyzz



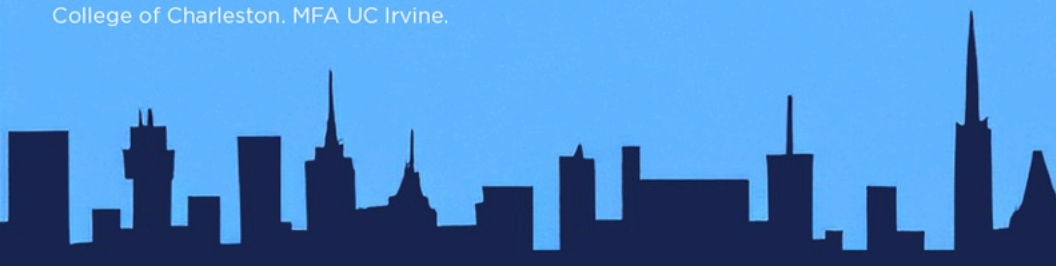
## BWALYA CHISANGA UNDERSTUDY/MAN

Somebody in *Everybody* at Stage West, *it's my party, and u can cry if u want to* at Very Good Dance Theatre.

## DONNETTA LAVINIA GRAYS PLAYWRIGHT

is the author of *Kudzu Calling*, *Where We Stand* (Lucille Lortel, Drama League, AUDELCO and Broadway Black award nominee), *Last Night and the Night Before*, *Warriors Don't Cry*, *Laid to Rest* and *The Review or How to Eat Your Opposition*. She is the recipient of The Whiting Award for Drama, Helen Merrill Playwright Award, The National Theater Conference's Stavis Playwright Award, Lilly Award, Todd McNerney National Playwriting Award and the Doric Wilson Independent Playwright Award. Donnetta holds commissions with Steppenwolf Theatre Company, Denver Center for the Performing Arts, Alabama Shakespeare Festival, WP Theater, SC New Play Festival and True Love Productions.

For television, she has staffed on Spectrum's *Manhunt*, FX's *Y: The Last Man*, served as Executive Story Editor on *Joe vs. Carole* for Peacock, and is currently co-producer on *Seconds* for AMC. Broadway acting credits include *The Skin of Our Teeth*, *In The Next Room, or the vibrator play* and *Well*. Off-Broadway: *Where We Stand* (WP Theater/Baltimore Centerstage), *Men on Boats* (Playwrights Horizons/Clubbed Thumb) *O, Earth* (The Foundry Theatre), *In the Footprint* (The Civilians - as an Associate Artist) and *Shipwrecked! An Entertainment* (Primary Stages). Film: *The Book of Henry*, *Wild Canaries*, *The English Teacher* and *The Wrestler*. TV: Recurring roles on *New Amsterdam*, *Happy*, *Rubicon*, *Mercy* and *Law and Order: SVU* and guest starring roles on *High Maintenance*, *The Night Of*, *Blue Bloods*, *The Blacklist*, *A Gifted Man*, *Law & Order*, *Law & Order: CI* and *The Sopranos*. Ms. Grays proudly hails from Columbia, South Carolina. B.A. College of Charleston. MFA UC Irvine.



# MEET THE ARTISTS

## AKIN BABATUNDE DIRECTOR

is an accomplished actor, director, and writer whose theatrical career spans Off-Broadway, regional theatre, film and television. He has been a resident company member of prestigious theatrical institutions throughout the country: Trinity Rep (Providence, R.I.), Alley Theater (Houston), La Mama Theater (New York City) and the Dallas Theater Center. He served as founder and artistic director of Vivid Theater Ensemble of Dallas and founder of Ebony Emeralds Classic Theater Company. Akin was the first African American to direct for the Dallas Shakespeare Festival in the celebrated diverse production of *Taming of the Shrew* in 1993. As a writer, his work has been commissioned by Florida Stage, La Mama Theater, the Dallas Office of Cultural Affairs, Brown University, the Black Academy of Arts and the Core Ensemble. Akin's work has been awarded a Dallas Observer Best Actor Award (the first African-American to receive this distinction), 1991, 2004, and 2015 Dallas Critics Forum Award, the 2010 Leon Rabin Award and the 2004 Legacy of Success Alvin Ailey Performing Arts Award. Mr. Babatunde received the coveted Audelco award for his direction of *Blind Lemon Blues* he co-wrote with Dr. Alan Govonar at the York Theater and a 2015 Audelco nomination for his direction of *Texas In Paris* which tours Europe in late December. Mr. Babatunde holds a Masters degree from the University of Texas and was honored with a 2012 distinguished alumni award from the school of Arts and Humanities. He was the inaugural recipient of the Theodore U Horger artist in residence for the visual and performing arts at Lehigh University. Recipient of DFW Irma Hall Black Arts Theater of Excellence and Best Director. Special thanks to Vandous Stripling II for dramaturgical research and support.

## RAYVEN HARRIS PRODUCTION STAGE MANAGER

worked at Stage West as Sound Designer for *Into the Breeches!*, Assistant Stage Manager for *The Importance of Being Earnest*, *Marjorie Prime*, *Cruel Intentions: the '90s Musical* and *Church & State*, and Production Assistant for *What to Send Up When It Goes Down* and *Scrooge in Rouge*. She has also served as Stage Manager for *East Texas Hot Links* at Jubilee Theatre, *Ada and the Engine* and *Intimate Apparel* at MainStage Irving, Sound Designer/ASM for *Black Nativity* at Jubilee Theatre, and as Sound Designer for *The Odd Couple* at WaterTower Theatre. She also served as Properties Designer for *Intimate Apparel* (MainStage), *The Elaborate Entrance of Chad Deity* and *Destroying David* (both Circle Theatre).

## BOB LAVALLEE SCENIC DESIGNER

Dallas Theater Center: *The Christians*, *Dreamgirls*, *The Mountaintop*, *The Rocky Horror Show*, *Joseph and the Amazing Technicolor Dream Coat*, *Raisin in the Sun*, *Clybourne Park*, *Cabaret*, *Second City Does Dallas*, *Red* and *A Christmas Carol*. Zach Theatre: *A Christmas Carol*, *Natasha Pierre and the Great Comet of 1812*. Casa Mañana Theatre: *West Side Story*. Water Tower Theatre: world premiere *Goin Hollywood*. Circle Theater: *One Man Two Guvnors*, *Sweeney Todd*, *Young Frankenstein*, *The Mountaintop*, *Fences*. Stage West: *Between Riverside and Crazy*, *Cruel Intentions*; *the Nineties Musical*, *An Octaroon*, *The Importance of Being Earnest*. Fort Worth Opera: *Three Decembers*. Television Production Designer 14 years *Barney* and *Friends*, Feature film Production Design: *Searching for Sonny* and *The Land of Make Believe*.



# MEET THE ARTISTS

## HOPE COX COSTUME DESIGNER

is a freelance Costume Designer based in the Dallas/Fort Worth area of North Texas. She has been designing and making clothing since before she was allowed to even use a sewing machine. She followed her passion for design to Baylor University, where she studied apparel design. There, she honed her pattern-making, tailoring and draping skills. Her first foray into the theatre world was a 2014 production of *La Cage Aux Folles* as a costume assistant. She fell in love with theatre and continued to pursue a career as a theatre artist. Soon after, she went on to costume her first show, *Hair*. Her area credits include *The Search for Intelligent Signs of Life in the Universe* at WaterTower, *The Elaborate Entrance of Chad Deity* at Circle Theatre, and *The Little Mermaid* for Dallas Theater Center. You can find information on Hope's past and upcoming productions at [www.hopcox.com](http://www.hopcox.com).

## BRYAN STEVENSON LIGHTING DESIGNER

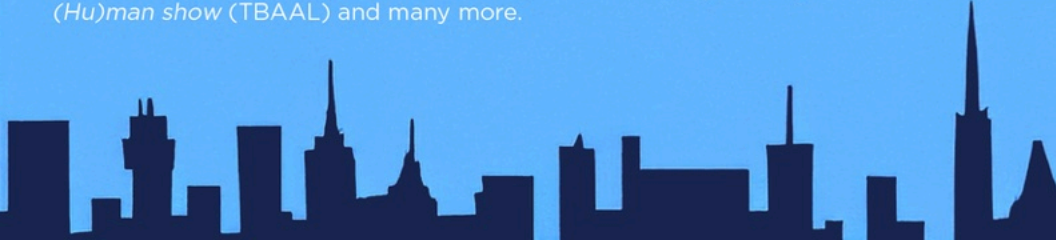
holds a BFA in Theatre from Texas Wesleyan University and an MFA in Design from University of Arkansas, Fayetteville. He has designed at many local theatre companies including Shakespeare in the Park, Stage West (including *All Is Calm: the Christmas Truce of 1914*, *Penelope*, *Primary Trust*, *POTUS: or, Behind Every Great Dumbass are Seven Women Trying to Keep Him Alive*, *Marjorie Prime*, *The Play That Goes Wrong*, *Guards at the Taj*, *On the Exhale*, *The Lifespan of a Fact*, *Holmes and Watson*, *An Octoroon*, *The Aliens and Bootycandy*), Jubilee and Circle. Nationally Bryan designs for the Boy Scouts of America National Conferences and Shows. Bryan is an active participant in the United States Institute of Theatre Technology, where he has served on panels on lighting and scenic design. He is also a member of Stagehands Union, IATSE local 126.

## CLAUDIA JENKINS MARTINEZ SOUND DESIGNER

is a Sound Designer based in Dallas Texas. Recent works include: *Tiny Beautiful Things* (Savannah Repertory Theater), *The Rocketmen* (Synchronicity Theater), *Incarinate* (Second Thought Theater) *Noises Off* (Dallas Theater Center), *The Niceties* (Theatre Three), *The Last Five Years* (Circle Theater), *Twelfth Night* (Pittsburgh Public Theater), *Xanadu* (Theatre Three), *Laughs in Spanish* (Horizons Theater, Atlanta), *H\*llo K\*tty Syndrome* (Undermain Theater). Much love to Austin and Georgia.  
[@claud\\_jenkinmartinez](https://twitter.com/claud_jenkinmartinez)

## ASHLEY OLIVER PRODUCTION MANAGER

is an Actor and Production/Stage Manager from Arlington, TX. She holds a BA in Drama from Prairie View A&M University and has worked in theaters around the DFW metroplex for over 20 years. She made her directorial debut with *Aint No Mo* (Soul Rep Theatre Company) and worked on such shows as *Our Town*, *Cake Ladies*, *Ann*, *Fetch Clay Make Man* (Dallas Theater Center) *Travisville*, *Hurt Village*, *Dot*, *Do No Harm* (Soul Rep Theatre), *Marie Antoinette* (Amphibian Stage) *Bootycandy*, *Mr. Burns Post-Electric Play*, *Deer* (Stage West), *Shakin the Mess Outta Misery*, *Flight*, *Once on this Island* (Jubilee Theater) and Erykah Badu's *One (Hu)man show* (TBAAL) and many more.



# MEET THE ARTISTS

## **ANDREW J. BROWN** DIRECTOR OF PRODUCTION

is in his sixth season with Dallas Theater Center, and fourth leading DTC's Production department. He served as Production Manager on shows including Public Works Dallas' 2022 production of *The Odyssey*, *The Sound Of Music*, *Our Town/Nuestro Pueblo*, *Working*, and *Tiny Beautiful Things*, as well as the world premiere productions of *The Supreme Leader* and *Cake Ladies*. Previously, Andrew worked with Lyric Theatre of Oklahoma (Oklahoma City, OK), Huntington Theatre Company (Boston, MA), and the Cape Playhouse (Cape Cod, MA). He holds an MFA and an Arts Administration Certificate from Boston University and a BFA from the University of Oklahoma.

## **JONATHAN NORTON** INTERIM ARTISTIC DIRECTOR

is the Interim Artistic Director and Resident Playwright at Dallas Theater Center, where his plays *penny candy*, *Cake Ladies*, and *I AM DELIVERED'T* have made their world premiere. His work has also been produced or developed by Actors Theatre of Louisville, Alabama Shakespeare Festival, Black and Latino Playwrights Conference, Jacob's Pillow, LaJolla Playhouse, National New Play Network, National Performance Network, PlayPenn, Primary Stages, Pyramid Theatre, TheatreSquared, and The Joyce. Locally he's worked with African American Repertory Theater, Bishop Arts Theatre Center, Kitchen Dog Theater, Soul Rep Theatre, South Dallas Cultural Center, Theatre Three and Undermain Theatre. Jonathan's play *Mississippi Goddamn* was a Finalist for the Harold and Mimi Steinberg/ATCA New Play Award and won the 2016 M. Elizabeth Osborn Award given by the American Theatre Critics Association. Other awards include: the Artistic Innovations Grant from the Mid-America Art Alliance, South Dallas Cultural Center Diaspora Performing Arts Commission, and the TACA Donna Wilhelm Family New Works Fund. His play *penny candy* is published by Deep Vellum Publishing.

## **KEVIN MORIARTY** EXECUTIVE DIRECTOR

is Executive Director of Dallas Theater Center. From 2007-2022 he served as DTC's Enloe/Rose Artistic Director, during which time DTC opened the Dee & Charles Wylie Theatre at the AT&T Performing Arts Center and won the Tony Award for Outstanding Regional Theater. Before joining DTC, Kevin served as artistic director of Hangar Theatre in Ithaca, NY; head of the MFA directing program at Brown University; and an associate artist at Trinity Rep Company. Kevin has directed plays, musicals, and operas nationwide. He has served as Chair of the Dallas Arts District; President of Theatre Communications Group; Vice-President of National Alliance for Musical Theatre. Kevin was a recipient of a Drama League directing fellowship and is a graduate of the University of Wisconsin.



# MEET THE ARTISTS

## STAGE WEST THEATRE

a cornerstone of Fort Worth's cultural landscape since 1979, serves the community with provocative and inspiring theatrical productions. Producing six mainstage shows annually, the company has earned recognition as Fort Worth Weekly's 2024 Best Theater Troupe and Best Theater Production. Stage West enriches the community through youth and adult theatre education, including the free Festival of the Kid program, which brings young playwrights' works to life. Located in the Near Southside at 821 West Vickery Boulevard, Stage West offers full accessibility including wheelchair access, ASL performances, and assisted listening devices.

## STAY LATE

for a conversation with the artists. After each performance, we invite audiences to stay late for a 15-minute conversation with members of the cast and artists from the show. *Where We Stand Stay Late* will be led by Liz Mikel.



Soul Rep Theatre Company proudly presents the fully staged world-premiere of the final work by the late, beloved Dallas playwright diannetucker. Inspired by the life of Hannah Elias, one of the wealthiest Black women of her era, this sweeping historical drama explores ambition, power, and resilience in turn-of-the-century New York. Developed with support from a TACA New Works grant, *Madam Queen* is both a bold celebration of Black women's leadership and a lasting tribute to an extraordinary artistic legacy.

# MADAM QUEEN

written by diannetucker

co-directed by guinea bennett-price and tonya holloway



**30** SOUL REP  
THEATRE COMPANY

Arts & Culture

SOUTH DALLAS

# THANK YOU TO OUR DONORS

## **\$50,000+**

Jennifer and Peter Altabef  
Diane and Harold Brierley  
Deedie Potter Rose

## **\$25,000-\$49,999**

Linda\* and William\* Custard  
Donna M. Wilhelm

## **\$10,000-\$24,999**

Troy Alley III  
Anne and Larry Angelilli  
Mickie and Jeff Bragalone  
Barbara and Mason Brown  
Sylvia Cespedes and Hernan Saenz

## **\$2,500-\$4,999**

Mary McDermott Cook  
Claudia and Scott Davis  
Susie and Curtis FitzGerald  
Rebecca and Barron Fletcher III  
Angela Fontana and Andy Szuwalski  
Sarah and Frank Hamlin  
Belinda and Lance Hancock  
Craig Haynes  
Dr. Michael Hinojosa  
Angela and John Howell  
Megan and John Hughet  
Rusty and John Jagggers

## **\$1,000-\$2,499**

Kate Juett  
Randall F. Kender and Eric G. Bing  
Eloise Laird  
Chris Luna and Kent Mecklenburg  
Deborah McMurray and Glen Davison  
Kathleen Messina and Gary Goodwin  
Susan and William Montgomery  
Nesha and George Morey  
Paula and Scott Orr  
Holly Mason and Andy Payne  
Cyndi Phelps

Beth and Daniel Plumlee

Helen and Frank Risch

Sarah Rodriguez

Teri and John Shaffer

Dawn Estes and David Timmins

Rob Russell

Ms. Ruth Robinson

Cheree and Kelvin Sellers

Andy Smith and Paul von Wupperfeld

Hamilton A Sneed

Venise and Lawrence Stuart

## **\$5,000-\$9,999**

Tina and John Barry

Karen and Edwin Bruning

Kay and Elliot Cattarulla

Bess and Robert Enloe

Susan and Woodrow Gandy

Carol and Don Glendenning

Mona and William Graue

Debra and Kenneth Hamlett

Jan and Fred Hegi

Trudy and Charles Hess

Sharron Hunt

Jennifer W Phillips

Stephanie and David Russakov

Linda and Mark Shirley

Heather and Chris Smith

Sarah\* and Don Warnecke

## **\$2,500-\$4,999**

Meredith and Rick Bjorck

Cathy Ann Fears and Mark Blaquiery

Allison and Chris Bovard

Clare and Cal Chaney

Sandy Cook

Kristy and Raymond R. Faus

Lynne and Gil Glover

Fanchon and Howard Hallam

Benjamin Hemsath

John Henry III

Debbie and David Johnson

Melinda and James Johnson

Teresa and Luther King

Janeva and Phillip Longacre

Carol and Kevin March

Carol Meyer

Vicki and Kent Newsom

Cecilia and Tim Norwood

Lolita and J. Ernest Sims

William and Gay Solomon

Alice and Richard Stevenson

Elizabeth and Stephen Suellentrop

Lynn Pride Richardson and Elvenn Richardson

Jane Wetzel

Linda and James Willson

JoEllen Zabel

Angela and Luis Zambrano

## **\$1,000-\$2,499**

Annie and Ron Adams

Ida Jane and Douglas Bailey

Barbara Clay and Kenneth Bernstein

Eleanor and John Birch

Robert Buckner and Jody Hall

Zenola Campbell

Dr. Florence Cox

Lynn and Andrew Derman

Lacy L. Durham



# THANK YOU TO OUR DONORS

Susan and Mike Fortin	<b>\$75-\$249</b>
Cathey and Randy Hall	Laura Aparicio
Dr. Christine Ho and Dr. Anil Koganti	Rhonda and Phil Appenzeller
Ellen and Charlie Johnston	Jane Arrington
Lisa and Peter Kraus	Frank Avignone
Gordon M. Markley & Russell S. Buescher	Dr. Rhonda Blackburn and Chris Bigenho
Scott McCartney	Emmanuel Bravo
Michael and Amy Meadows	Mary Brinegar
Tom Norris	Mrs. Eileen D. Brown
Karol and Larry Omlor	Tanya L. Carlis
Yvette Ostolaza and Peter Dewar	Cheri R. Childress
Renita and Mark Partin	Dr. Troy Cobb
Amber D. Reece	John W. Dayton
Joan and Paul Ridley	Richard Dobbyn
Rosalyn and Stephen Sills	Robin Brasher Dotson
JoAnn and Robert Tobey	Janet and Ed Ellis
Shari and Jay Tobin	Lois and Ross Finkelman
Patricia Kozak and Jeff Warr	Rhonda B. Friedman
George Wilson	Catalina Esperanza Garcia
<b>\$500-\$999</b>	W. John Glancy
Charlotte Booth	Katherine Glaze Lyle
Elizabeth Bull	Aimee and Paul Griffiths
Carol and Edward Burger	Pamela R. Hill
Richard Chavez	Jacob Hurwitz
Lillian Clark	Tony and Stephanie Inerra
Taylor Cleghorn Family	Dr. Mark E. Jacobs
Noel Pullam and Darryl Clement	France and Stan Jacot
Douglas Davis	Dr. Jay Jaffe
Leonard Hirsch	Sue and Phillip John
Jaime Agustin Jaramillo	Corinne and David Karp
Ellen Key	Elizabeth and Gary Keep
Deborah and Jim Nugent	Betty Keefe
Ann Marie and Charles Rosenfeld	Chloe and Kevin Lemelle
Joyce Sanders and Robert Lebovitz	Lily Lin
Sandy Singer	Corliss and Lorenzo Littles
Mine and Adnan Yucel	Patricia and Steve Loe
<b>\$250-\$499</b>	Kristin Malmberg
Anne Allred	Cynthia Marshall
Belinda Vicioso and M. Bernhardt	Judy and John Mathis
Denise and Gregory Boydston	Sue McAdams
Shimon Braff	Michelle Moreno
Jennifer Cassell	Mal Noone
Dee Daniel	Valerie Patton
Clare and Larry DeBoever	Kyle Pennington
Michael F. Lewis	Allie Perkins
Jesse McClellan	Elizabeth Pickett
Charles Ostermann	Robin Plata
Marian and Jack Spitzberg	Melvin and Jody Platt
Katie Worden	Arlene and William Press
Jeff Heald and Michael Zerbach	Carolyn Raiser



# THANK YOU TO OUR DONORS

Kathryn Ritcheske Fichtenbaum Charitable Trust  
Duane and Ann Roberts Graue Family Foundation  
Rudy Rodriguez Hal and Diane Brierley Foundation  
Julie Romeo Halperin Foundation  
Denis and Denise Simon Harold Simmons Foundation  
Jack Smith Harry S. Moss Foundation  
Michele Stephens Hegi Family Foundation  
Jill and Gary Stolbach Koz Foundation  
Wendy Strick M.R. and Evelyn Hudson Foundation  
Dee Swope March Family Foundation  
Charles Tackett Meadows Foundation  
Kyle C. Talkington National Christian Foundation North Texas  
John and Susan Wellik National Jewish Theater Foundation  
Karen Wiese Ninnie L. Baird Foundation  
Margaret Wilonsky NiSource Charitable Foundation  
Willa Henigman and Gregory White Preston Hollow Women's Club

## FOUNDATION AND COMMUNITY PARTNERS

Addy Foundation  
American Endowment Foundation  
Americans for the Arts National Arts Relief Fund  
AT&T Performing Arts Center  
Ayco Charitable Foundation  
Batton Family Charitable Fund  
Bratton Family Charitable Fund  
Bruning Foundation  
City of Dallas Office of Arts & Culture  
Communities Foundation of Texas  
Community Foundation for a Greater Richmond  
Crawley Family Foundation  
Dallas Foundation  
Dallas Jewish Community Foundation  
Dallas Shakespeare Club  
Dallas Tourism Public Improvement District  
Dirk Nowitzki Foundation  
Edward W. Rose III Family Fund  
Eugene McDermott Foundation  
Saenz Family Foundation  
Sapphire Foundation  
Shubert Foundation  
Stemmons Foundation  
TACA, Inc.  
Texas Commission on the Arts  
Texas Instruments Foundation

## TRIBUTES/IN HONOR OF

Jennifer Altabef  
Mickie Bragalone  
DTC Board and Staff  
Lee Cullum  
Bill Custard  
Alfred Fairchild  
Pilar Henry  
Saenz Family  
Kevin Moriarty  
Johnathan Norton  
Doug Sturdivant  
Sarah Warnecke

\*deceased

Reflects membership giving as of February 9, 2026



## BECOME A SUPPORTER

Donate to Dallas Theater Center and enjoy exclusive benefits like "Sneak Peek" events, free parking, and special ticket offers, all while helping us bring powerful stories to life on stage. We'd love to welcome you!

[giving@dallastheatercenter.org](mailto:giving@dallastheatercenter.org) | 214.252.3916



# SAENZ FAMILY FOUNDATION

We celebrate our years  
of partnership with the  
Dallas Theater Center  
and their commitment to  
bringing extraordinary  
theater to Dallas.

**SALUM**

4152 Cole Avenue, Ste. 103  
Dallas, Texas 75204  
214.252.9604 | salumrestaurant.com



Dallas Theater Center ticket holders receive 15% off  
with your evening theater ticket.



# BOARD OF TRUSTEES

Lynn Pride Richardson | Board Chair

Andy Smith | Board President

Deborah McMurray | Secretary

Sarah Rodriguez | Treasurer

Troy Alley III  
Jennifer Altabef\*  
Stephanie Anderson  
Jeff Bragalone  
Diane Brierley\*  
Linda Custard\*  
Scott Davis  
Lacy Durham  
Lauren Embrey  
Bess Enloe\*  
Dawn Estes  
Kathleen Foley  
Mehr Hameed^  
Frank Hamlin  
Lance Hancock

Craig Haynes  
Michael Hinojosa  
John Howell\*  
Megan Hughet  
Sharron Hunt  
John Jagers  
Kate Juett\*  
Julie Kosnik\*  
Chris Luna  
Holly Mason  
Kevin Moriarty  
Scott Orr  
Yvette Ostolaza  
Adriana Perales  
Cyndi Phelps

Jennifer Phillips  
Beth Plumlee  
Frank Risch\*  
Robert Russell  
Deedie Rose\*  
Kelvin Sellers  
Teri Shaffer  
Hamilton A Sneed  
Heidi Soltis-Berner  
Venise Stuart  
Andy Szuwalski  
Donna Wilhelm\*  
Krista Weinstein  
Angela Zambrano

\*Life Trustee

^SMU Board Fellow

## SEASON DEDICATION



**DTC's 2025–26 season is dedicated to the memory of William Allen (“Bill”) Custard.**

Bill passed away in March 2025 after a lifetime of extraordinary philanthropy and devoted service to Dallas Theater Center. A Life Trustee and twice Board Chair, Bill and his beloved wife, Linda, shared a profound and enduring bond with DTC—one of their earliest dates was attending the opening night of the Kalita Humphreys Theater in 1959, beginning more than six decades of generosity and leadership.

In both good times and hard times, Bill listened with care, navigated challenges with wisdom and grace, and offered counsel with strength, warmth, and humor. DTC's highest honor, the Linda and Bill Custard Award, is bestowed each year upon someone whose impact has left an indelible mark on our theater's history. All of us at DTC who follow in his footsteps strive to live up to his remarkable example. As Shakespeare wrote, “He was a man, take him for all in all, I shall not look upon his like again.”



# STAFF & LEADERSHIP

## LEADERSHIP

Executive Director/CEO.....	Kevin Moriarty
Interim Artistic Director.....	Jonathan Norton
Director of Production & Artistic Contracting.....	Andrew J. Brown
Director of Public Works.....	Brandi Giles
Director of Marketing, Sales & Communications.....	Caroline Hamilton
Chief Financial Officer.....	Dana Landers
Chief Relationship Officer.....	Robin Plata
Director of EDI & People Operations.....	Gabriel Vazquez

## ADMINISTRATION

Technical Operations Manager.....	Shaundra Gabriel
Facilities Manager.....	Albert Gonzales
Operations Manager.....	Lori Jones Rogers

## DEVELOPMENT

Individual Donor Relations Officer.....	Annabel Guevara
Institutional Giving Officer.....	Octavia Mason
Board Liason & Development Associate.....	Erica Harkins

## FINANCE AND ACCOUNTING

AP & Payroll Specialist.....	Patricia Gomez
Financial Analyst.....	Kolu Kpakolo

## MARKETING & COMMUNICATIONS

Marketing Manager.....	Jillian Guillory
Digital Content & Strategy Manager.....	Andy Nguyen
Box Office Representatives.....	Tiinia Auler, Christa Barlow, Grace Ford Dani Ruiz, Bailey Watson
Tessitura Database & Analytics Manager.....	Rachael Downs

## PRODUCTION

Production Manager.....	Ashley Oliver
Interim Contracts Manager.....	Leah Fitzgerald
Technical Director.....	Matt McFarland
Lead Carpenter.....	Imani McCants
Staff Carpenter.....	Wyatt Niemietz
Stage Operations Manager.....	Squeak Henderson
Head of Props.....	John Slauson
Assistant Head of Props.....	Nicole Gagnat
Costume Director.....	Micheal Heath Wilhelm-Waid
Lead Draper.....	Christopher Harris
First Hand.....	Maggie Coe
Wardrobe Supervisor.....	Rebecca Holt
Wigs, Hair & Makeup Supervisor.....	Nick Lynch-Voris
Head of Lighting.....	Troy Carrico
Assistant Head of Lighting.....	Caroline Hodge
Staff Electricians.....	Jason R. English, Wesley Martinez
Head of Audio & Video.....	Paula Garcia
Lead Audio Engineer.....	Amadeo Fonseca
Head of Stage Management/Resident PSM.....	Stephen Ravet



# DIANE & HAL BRIERLEY RESIDENT ACTING COMPANY



**CHRISTINA AUSTIN  
LOPEZ**



**TIANA KAYE BLAIR**



**BLAKE HACKLER**



**BOB HESS**



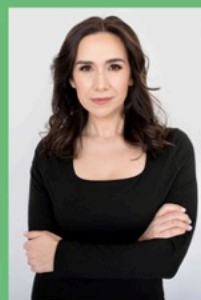
**LIZ MIKEL**



**ALEX ORGAN**



**MOLLY SEARCY**



**TIFFANY SOLANO**



**SALLY NYSTUEN  
VAHLE**



**ESTEBAN VILCHEZ**



**ZACHARY J. WILLIS**



**BRI WOODS**



In 2009, with the generous support of Diane and Hal Brierley, Artistic Director Kevin Moriarty reinstated Dallas Theater Center's resident acting company. His intent was to develop and nurture professional actors within the North Texas community and enable them to make Dallas their artistic home. At the same time, he sought to enhance Dallas Theater Center's artistic profile and create ongoing collaborative relationships. The twelve-member Diane and Hal Brierley Resident Acting Company has since become a signature component of Dallas Theater Center's presence in the Dallas Arts District.



# BEFORE WE BEGIN

*The story you will hear tonight has already happened. What remains is what the community will decide.*

Liz Mikel plays a lone storyteller—an Everyman—who addresses the audience as the people of his town. She tells how, exhausted by poverty and being overlooked, the man encountered a mysterious Stranger who offered him relief, dignity, and power in exchange for a pact. With enchanted tools, the man was suddenly able to transform his land—and soon the entire town—into a place of abundance and prosperity.

As the town flourished, the man became a leader, admired and elevated by the community. But the Stranger's name began to appear everywhere, and it became clear that the prosperity rested on a dangerous bargain: the town's joy was built on illusion, and its soul no longer fully belonged to itself.

When the town reclaimed ownership of its story and credited the prosperity to itself rather than to the Stranger, the pact was broken, and the abundance collapsed into ruin. The Stranger returned and demanded payment.

In the end, the town is given a choice: punish the man who made the deal and restore prosperity, or show mercy and remain together—knowing they must rebuild from nothing.

At the end of the play, the audience becomes the town. You are asked to vote on the man's fate, deciding what justice, responsibility, and community truly mean.

---

## 2025-26 SEASON PARTNERS

